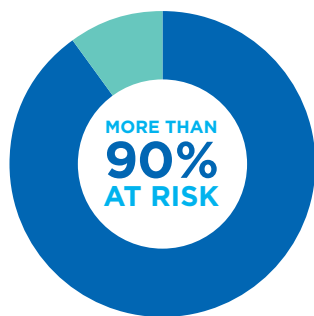




NEW EYEZEN™+ LENSES!

DIGITAL EYE STRAIN



More than **90%** of adults are at risk for digital eye strain.¹



Almost **73%** of adults are unaware of the potential dangers of blue light to eyes.¹

¹ The Vision Council, "Hindsight is 20/20/20: Protect Your Eyes from Digital Devices 2015 Digital Eye Strain Report" 2015

HOW EYEZEN+ IS DIFFERENT

A single vision patient's everyday lens with **two major benefits**:

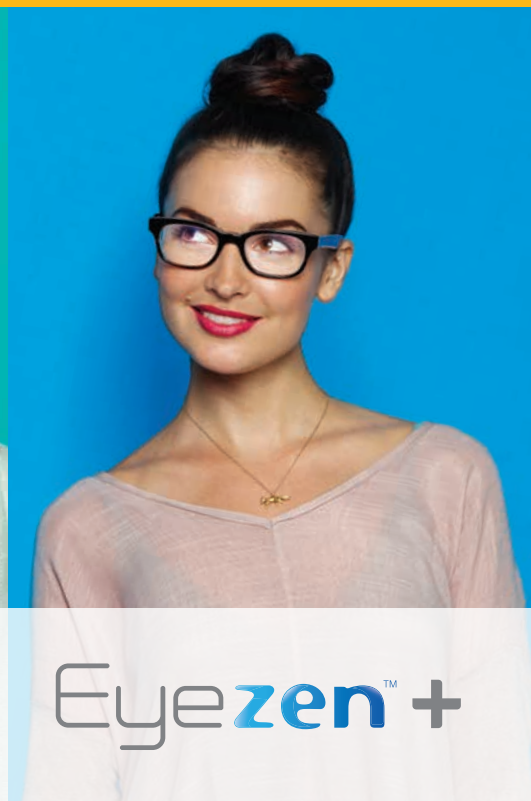
Defends against eye strain associated with device use

Eyezen+ lenses contain a small amount of accommodative relief to help alleviate eye strain caused by viewing near objects, like cell phones and tablets, for hours on end.

Reduces exposure to Harmful Blue Light

Eyezen+ lenses utilize Essilor's Smart Blue Filter™ feature, which reduces exposure to Harmful Blue Light coming from devices, inside lighting, and even the sun.*

Recommend a more complete solution to modern vision problems with Eyezen+ lenses



Eyezen™+

DISPENSING INFORMATION

There are three unique Eyezen+ lens designs, and the patient's age will determine which Eyezen+ design is right for them. The difference between the designs is the amount of accommodative relief the patient will receive in the lens:



EYEZEN+ 1
Patients age 18 to 34
(0.4 diopters)



EYEZEN+ 2
Patients age 35 to 44
(0.6 diopters)



EYEZEN+ 3
Patients age 45 to 50
(0.85 diopters)*

AGE 18

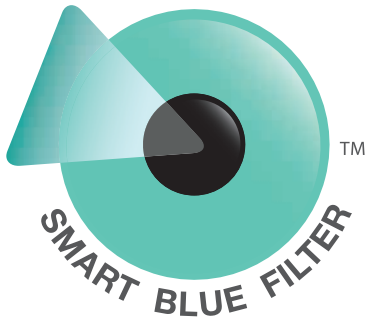


AGE 50

Patient's age will determine which design is right for them.

Eyezen+ lenses are fitted, ordered, and dispensed like a traditional single vision lens, except Eyezen+ lenses also **require a fitting height**. Simply measure from the center of the pupil to the lowest point of the lens to acquire fitting height.

*It is recommended you consider progressive lenses with your patients age 45-50.



SMART BLUE FILTER™

Eyezen+ lenses utilize the Smart Blue Filter feature

This feature reduces the amount of Harmful Blue Light reaching your patients' eyes. Smart Blue Filter is embedded protection in the lens that reduces your patients' exposure to Harmful Blue Light by at least 20% and is clear in color and appearance. Combine with Crizal® lenses for the most comprehensive eye protection.*



RECOMMEND EYEZEN+ LENSES TODAY!

Go to EyezenPro.com for additional information and materials

*Eyezen+ lenses block at least 20% of Harmful Blue Light, which is the high energy waves found between 415–455nm (blue-violet light).

©2016 Essilor of America, Inc. All Rights Reserved. Unless indicated otherwise, all trademarks are the property of Essilor International and/or its subsidiaries in the United States and in other countries. LEZN000023 SHK/HB 3/16

